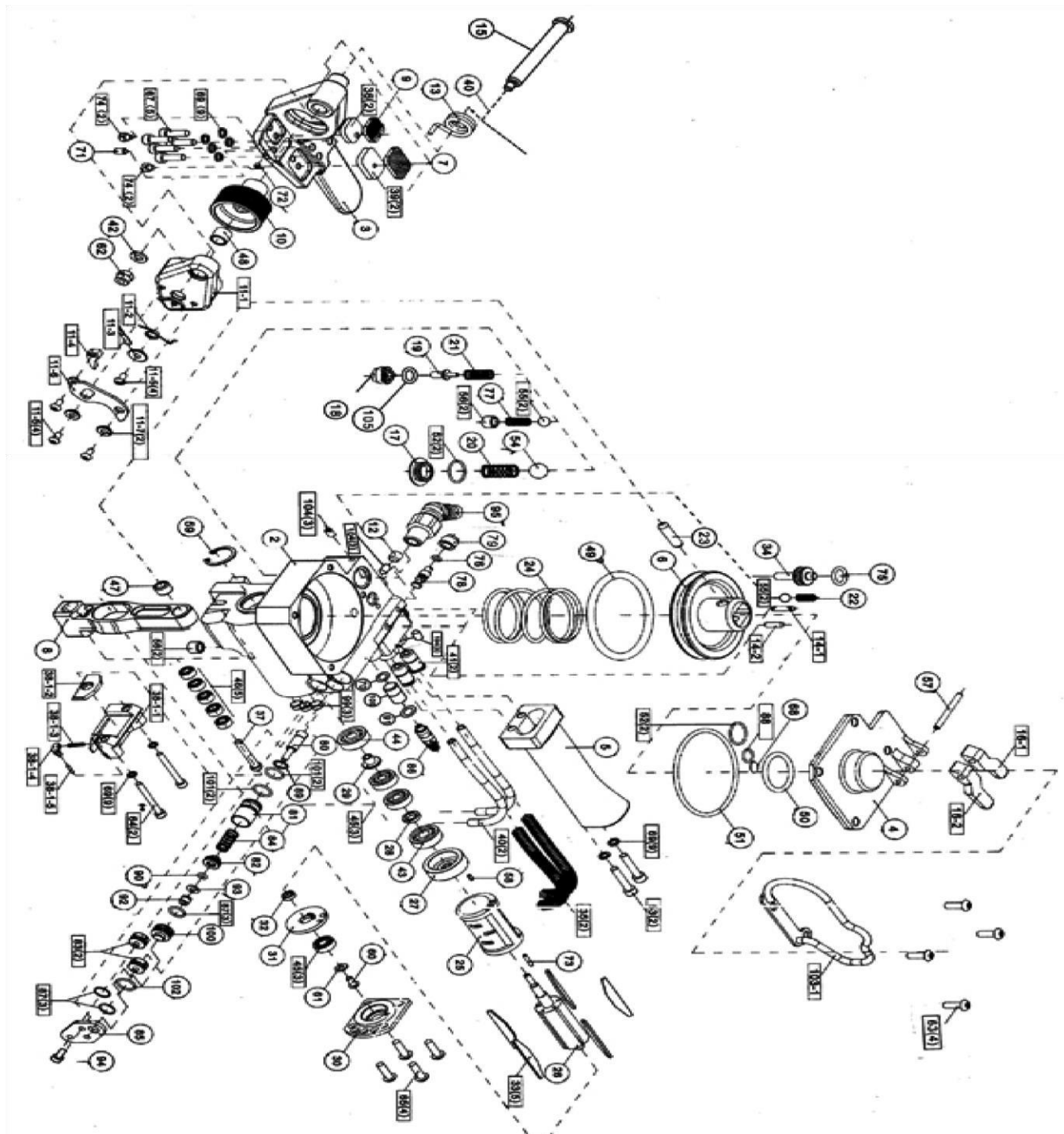




APARELHO CONJUGADO PNEUMATICO





APARELHO CONJUGADO PNEUMATICO

Rua Coimbra 560 Cotia - SP- CEP 06712-410 Tel. (11) 4158-6024/(11) 2690-4108

CNPJ. 18.555.320/0001-73 / www.moscka.com.br

Nro	Descrição	Qtde.	Nro	Descrição	Qtde.
2	Housing	1	37	Cutter Pin	1
3	Baling Holder	1	38-1	Cutter Assembly (19mm)	1
4	Cylinder Cover	1	38-1-1	Fixed Cutter	1
5	Handle	1	38-1-2	Mobile Cutter	1
6	Piston	1	38-1-3	Spring	1
7	Bottom Die	1	38-1-4	Positioning Hook	1
8	Vibrator	1	38-1-5	Spring Pin	1
9	Gripper Plug	1	38-2	Cutter Assembly (16mm)	1
10	Tight Wheel	1	38-3	Cutter Assembly (13mm)	1
11	Front Guide Assembly	1	39	Shim (Bottom Die)	2
11-1	Front Side Guide	1	40	Air Tube	2
11-2	Torsion Spring	1	41	Tube Fitting	2
11-3	Big Bush	1	42	Flat Washer	1
11-4	Location-Limited Block	4	43	Ball Bearing	1
11-5	Button Headed Screw	1	44	Ball Bearing	1
11-6	Location-Limited Plate	2	45	Ball Bearing	3
11-7	Small Bush	1	46	Ball Bearing	5
12	Set Screw	1	47	Needle Bearing	1
13	Holder Spring	1	48	DU Bushing	1
14-1	Valve Pin (L)	1	49	O-Ring	1

Rua Coimbra 560 Cotia - SP- CEP 06712-410 Tel. (11) 4158-6024/(11) 2690-4108

CNPJ. 18.555.320/0001-73 / www.moscka.com.br



APARELHO CONJUGADO PNEUMATICO

14-2	Valve Pin (S)	1	50	O-Ring	1
15	Hanger Pin	1	51	O-Ring	1
16-1	Valve Lever (Tensioning)	1	52	O-Ring	2
16-2	Valve Lever (Vibration)	1	53	Screw, Button Hd. Cap	2
17	Valve Cover	1	54	Urethan Ball	1
18	Release Pin Guide	1	55	Nylon Ball	2



APARELHO CONJUGADO PNEUMATICO

19	Release Pin	1	56	Plug	1
20	Spring (Main Valve)	1	57	Spring Pin	1
21	Spring (Release Pin)	1	58	Spring Pin	2
22	Spring (Release Valve)	1	59	Retaining Ring	1
23	Pivot Pin	1	60	Unbrako Loc-Wel	1
24	Spring (Air Cylinder)	1	61	Flat Washer	1
25	Motor Cylinder	1	62	U Nut	1
26	Rotor	1	63	Screw, Button Hd. Cap	4
27	Front Cylinder Cover	1	64	Screw, Button Hd. Cap	2
28	Spacer	1	65	Screw, Button Hd. Cap	4
29	Sleeve	1	66	Screw, Button Hd. Cap	1
30	End Cover	1	67	Screw, Soc. Hd. Cap	5
31	Rear Cylinder Cover	1	68	Spring Washer	1
32	Rotor Ring	1	69	Spring Washer	9
33	Vane	1	70	Spring Washer	1
34-1	Pressure Piston	2	71	Set Screw	1
35	Stress Spring	2	72	Set Screw	1
36	Shim (Gripper Plug)	1	73	Spring Pin	1

Nro	Descrição	Qtde.	Nro	Descrição	Qtde.
74	Screw, Soc. Hd. Cap	2	X11	Adapter Sleeve	1
75	O-Ring	1	X12	Cylinder	1



APARELHO CONJUGADO PNEUMATICO

76	O-Ring	1	X13	Front Cylinder Cover	1
77	Spring (Tightner)	1	X14	Rear Cylinder Cover	1
78	Throttle Valve	1	X15	Rear Bearing Cover	1
79	Throttle Valve Cover	1	X16	Rotor	1
80	Shutoff Valve	1	X17	Rotor Ring	1
81	Mini Cylinder	1	X18	Vane	5
82	Mini Piston	1	X19	Idle Farne	1
83	Tank Cover	2	X20	Idle Gear	2
84	Spring (Mini Cylinder)	1	X21	Idle Gear Shaft	2
85	Cover Plate	1	X23	Ring	1
86	Needle Unit INA-14-444	1	X27	Valve Pin	1
87	O-Ring	3	X28	Valve Spring	1
88	O-Ring	1	X29	Bottom Cap	1
89	O-Ring	1	X33	Ball Bearing	1
90	O-Ring	1	X35	Ball Bearing	3
91	O-Ring	1	X36	Ball Bearing	1
92	U Nut	1	X37	Ball Bearing	2
93	Flat Washer	1			
94	Screw, Soc. Hd. Cap	1			



APARELHO CONJUGADO PNEUMATICO

95	Turn Elbow	1			
96	Tightner (High Tension)	1			
97	Tightner (Medium Tension)	1			
98	Tightner (Low Tension)	1			
99	Filter Element	3			
100	Mini Cylinder Cover	1			
101	O-Ring	2			
102	O-Ring	1			

103-1	Suspension (Top Sealing)	1			
103-2	Suspension (Vertical Sealing)	1			
103-3	Suspension (Horizontal Sealing)	1			
104	Set Screw	3			
105	Spacer	1			
106	Copper Bush	1			
X2	Gear Case	1			



APARELHO CONJUGADO PNEUMATICO

X3	Spiroid Gear	1			
X4	Spiroid Pinion	1			
X5	Bearing Case	1			
X6	Cover Plate	1			
X7	Motor Case	1			
X8	Internal Gear	1			
X9	Valve Body	1			
X10	Bearing Ring	1			